

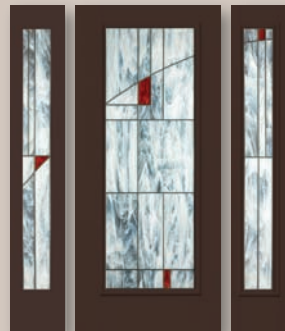
Supplement to

Professional Builder®

CHALLENGE. INSPIRE. INFORM. / www.ProBuilder.com

100
Best
new
products

Masterpieces Available Already Framed



*The NEW Element
Smooth Star®*



*The NEW Savannah™
American Style Collection™*



*The NEW Hazelton™
American Style Collection™*

Even our glass reflects our commitment to innovation and design. That's why we're pleased to introduce three new beautiful door glass options – the modern, art-inspired *Element*, plus the *Savannah* and *Hazelton* patterns from our American Style Collection.™ For more information on how to acquire these or other Therma-Tru masterpieces, visit your local dealer or go to thermatru.com.

For FREE info go to <http://pb.ims.ca/5650-1>



THERMA-TRU
DOORS

The Most Preferred Brand in the Business™

Contents

Professional Builder

100
Pest
*new
products*

5 PERSPECTIVE

7 DOORS

11 EXTERIORS

19 INTERIORS

**27 MECHANICAL &
ELECTRICAL**

**31 MILLWORK &
MOLDING**

**34 PAINTS, CAULKS &
SEALANTS**

**37 STRUCTURAL,
INSULATION &
HOUSEWRAP**

40 SOFTWARE

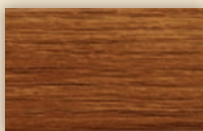
**42 CONSTRUCTION
EQUIPMENT &
TOOLS**

46 WINDOWS




THE BEST WOOD WINDOW
FOR BUILDERS JUST HAPPENS
TO BE MADE OF VINYL.

FLAT CASING • WOODGRAIN INTERIOR • DOUBLE HUNG • SIMULATED DIVIDED LITES • INTEGRAL BRICKMOULD/J-CHANNEL



No wonder it was named one of the “100 Best New Products for 2008” by *Professional Builder* magazine.

Simonton ProFinish® Brickmould 600 Series windows are the first to combine the beauty of wood with the unbeatable advantages of vinyl. They're available with simulated divided lites, a rich woodgrain interior, and a flat casing option that provides the classic appearance of traditional wood windows. They also feature an integral brickmould that can function as a J-channel for the ultimate jobsite versatility. Best of all, their lasting beauty is crafted in energy-efficient, low-maintenance vinyl. To locate a distributor, call or click.

 **SIMONTON**
Pro Finish®
New Construction Windows
BRICKMOULD 600 SERIES

1-800-SIMONTON simonton.com

For FREE info go to <http://pb.ims.ca/5650-2>

staff

Editorial Director

Paul Deffenbaugh 630/288-8190
paul.deffenbaugh@reedbusiness.com

Creative Director

Bill Patton 630/288-8050
bpattan@reedbusiness.com

Assistant Managing Editor

Sara Zailskas 630/288-8197
sara.zailskas@reedbusiness.com

Senior Editors

Susan Bady 630/288-8194
susan.bady@reedbusiness.com

Mark Jarasek 630/288-8171
mark.jarasek@reedbusiness.com

Bill Lurz 941/371-4804
bill.lurz@reedbusiness.com

Felicia Oliver 630/288-8483
felicia.oliver@reedbusiness.com

Products Editor

Nicholas Bajzek 630/288-8187
nicholas.bajzek@reedbusiness.com

Editorial Assistant

Jennifer Powell 630/288-8297
jennifer.powell@reedbusiness.com

Production Editor

Kristin Foster 630/288-8167
kristin.foster@reedbusiness.com

Contributing Editors

John Rymer, Paul Cardis, Rodney Hall

Senior Contributing Editor

Ann Matesi

SALES, MARKETING AND EVENTS

Vice President

Julian Francis 630/288-8826
julian.francis@reedbusiness.com

Publisher

Tony Mancini 610/205-1180
armancini@reedbusiness.com

Director of Events

Judy Brociek 630/288-8184
jbrociek@reedbusiness.com

Marketing Director

Gayle Colbert 630/288-8693
gayle.colbert@reedbusiness.com

Marketing/Events Coordinator

Heather Weber 630/288-8109
heather.weber@reedbusiness.com

FINANCE, RESEARCH AND CIRCULATION

Director of Finance

Bruce Ksiazek 630/288-8120
bksiazek@reedbusiness.com

Audience Marketing Manager

Angela Tanner 800/446-6551
subsmall@reedbusiness.com

Research Director

Barbara Allelujka 630/288-8175
barbara.allelujka@reedbusiness.com

EDITORIAL AND PUBLISHING OFFICE

Professional Builder

2000 Clearwater Drive
Oak Brook, IL 60523
Telephone: 630/288-8000
Fax: 630/288-8145

Reed Business Information

Tad Smith Chief Executive Officer
Jeff Greisch President, Chicago Division

perspective

100 Best New Products



If you work for a builder today, you are focused on controlling or cutting costs. The person who is probably feeling the most pressure, though, is the purchasing manager. Slashing nickels, dimes and even pennies from building product purchases is essential. At the beginning of the recent downturn, some builders turned to their suppliers and asked for a 10 percent reduction of cost right off the top.

Now we're to the point where the product manufacturers and distributors have nothing left to give. They're facing increased commodity pricing and reduced demand, which is a supply versus demand economic model nightmare. Add in soaring energy costs, and we've got quite a puzzle to solve.

Nonetheless, in the midst of these desperate times, manufacturers are still innovating, making new products that builders and their purchasing managers can potentially use to find those nickels, dimes and pennies of savings.

For the second year, *Professional Builder* editors have identified the 100 Best New Products that were introduced in the last year. These are the products that will change our view of home building over the next few years.

To make the cut, products met all or most of the following criteria:

The product represents advancement in technology. This is a common area in today's technology-driven world, but real technological advancement — not just enhancement — is rare. When it comes along, that manufacturer will force its competitors to make changes or flounder.

The manufacturer makes a significant improvement to an existing product. Some of the most notable advancements in building products are built on a platform of an existing product, not the creation of a whole new product.

The manufacturer introduces a whole new line. Every editor at *Professional Builder* receives dozens of e-mails, phone calls and posted mail daily about changes to products and services. Usually, the public relations firms contacting us are trying to create buzz around the most mundane events — a new color for a product that hasn't changed in years; securing distribution in some backwater area where only 7 homes are built annually; or Cousin Doug's promotion to regional sales manager. To determine the 100 Best, we weed through all that distracting information to root out what is truly new and innovative. Introducing a product line is new. Introducing a new stain to an old product line isn't.

The product increases competition. This criterion is my personal favorite. What we're after are products that have instantly become so popular that every competitor out there is moving to get something to market that competes with it. That product is serving the market's needs in ways others aren't.

This year's 100 Best New Products represent the finest achievements of the building product and service industry.

Paul Deffenbaugh

Paul Deffenbaugh, Editorial Director
paul.deffenbaugh@reedbusiness.com

The garage door opener with an amazing story inside.



The **prodrive®** garage door opener with **Z-Wave®** technology from Wayne-Dalton. With a single press of **prodrive's** 3-button remote, you can open or close your garage door, as well as activate any Z-Wave Home Controls device — turn on your garage lights, outdoor security lights, indoor pathway lighting, arm the security, adjust the thermostat, and much more. Visit www.Wayne-Dalton.com and get the whole story on how Wayne-Dalton can enable your homes with value and enhanced market appeal.

www.Wayne-Dalton.com

life's front door™



Deluxe Wireless Remote Control
Control lighting and other household devices. Includes timer. Saves energy.



USB Z-Wave® Adapter
Easy to use PC and MAC interface for household control.



Wireless Control In-Wall Dimmer Switch
Replaces standard dimmers. Works with remote, or as manual switch/dimmer. Saves energy.

©2008 Wayne-Dalton Corp.
Z-Wave® is a registered trademark of Zensys, Inc. and/or its subsidiaries.

For FREE info go to <http://pb.ims.ca/5650-3>

Pest Doors

A recent Jeld-Wen study confirms just how important exterior doors are to hooking new owners. Real-estate agents said that 82 percent have had potential buyers decline to look inside a home based on its exterior. But this Jeld-Wen folding door, for example, provides plenty of aesthetic appeal in addition to functionality. This system operates accordion style where each section slides on an overhead track and neatly folds away.

A These 90 Degrees Are Hot

It's the flair that counts — at least according to Jeld-Wen. The Exterior Folding Door System offers technology that features a true 90-degree corner that can be completely opened to the outdoors. How? Two folding door units meet at the corner where two walls would ordinarily join. Beveled door edges and double weatherstrips ensure the doors seal off the elements. **For FREE information, visit <http://pb.ims.ca/5650-125>**

Best Doors



B



C



D



E

B Pultruded Performer

Made from a hardy pultruded fiberglass material, the new All-Ultrex Sliding Patio Door from Integrity from Marvin, Marvin Windows and Doors' Ultrex product line is a low-maintenance door that features factory-applied jamb extensions and a drywall return for extra flexibility. A special folding nailing fin makes the job even easier. The doors come in sizes up to eight feet. **For FREE information, visit <http://pb.ims.ca/5650-126>**

C Make an Impact

The new Opaque Impact Rated Doors by Therma-Tru Doors are made for builders in coastal areas or for those just looking to beef up their protection. The Opaque Impact doors have a unique innovation in the integrated steel plate inside to help the doors withstand impacts. The doors are Miami-Dade and Broward County approved. **For FREE information, visit <http://pb.ims.ca/5650-127>**

D Greening the Garage

Clopay is introducing a new double-wall honeycomb 1/4-inch thick polycarbonate window panel option for its residential Avante Collection doors. Billed as a green option, the material used in the doors is durable and lightweight. Doors are made in both clear and bronze-tinted finishes. **For FREE information, visit <http://pb.ims.ca/5650-128>**

E Form a Barrier

French doors are hot right now. Simpson Door Co.'s latest technology has French doors with the new WaterBarrier technology, which combines a one-piece medium density overlay and PVC sticking on the outside of the door to help keep the elements out. The doors also use Simpson's UltraBlock on the stiles to block water infiltration. **For FREE information, visit <http://pb.ims.ca/5650-129>**

Best Doors



F



G



H



I

F The Entrance to Your Lair

Making the most out of available space, the new Bookcase Door System from Woodfold is both attractive and functional with a unique low-profile hardware system for flush look. The bookcases are made from the company's ApplePly veneer face in oak, cherry or maple. The doors cover most common openings and ship fully assembled. **For FREE information, visit <http://pb.ims.ca/5650-130>**

G Ride 'Z' Wave

Increasing the competition and upping the technological ante, Wayne Dalton's Z-Wave-enabled ProDrive garage door openers are ceiling mounted and are made to reduce noise and vibration. The Z-Wave part of the system is a two-way RF technology that allows all connected devices to act as repeaters, increasing reliability. **For FREE information, visit <http://pb.ims.ca/5650-131>**

H What's the Password?

Harkening back to the prohibition era and representing a new product line, the Speakeasy door from Weather Shield's Collections series is built with 2¼-inch-thick panels in five wood species. The door's distressed, plank-style construction goes well with the small opening, which is fitted with insulated glass and kept closed by a bronze clasp. **For FREE information, visit <http://pb.ims.ca/5650-132>**

I I Can See Clearly Now

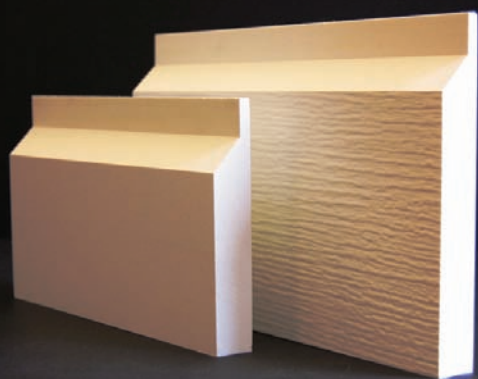
Homeowners want to enjoy the view from their patio doors. Helping visibility along is Milgard's new improvements to its Classic Series line of patio doors with the PureView screens. The fiberglass construction makes the screens tougher, and the smaller openings improve the look and curb appeal. **For FREE information, visit <http://pb.ims.ca/5650-133>**



This builder would never cut corners.
He let us do it for him.

Patent Pending

NEW FOR 2008! Stealth Skirt Board



The real hidden benefit to installing Stealth Trim from Versatex.

Versatex® has engineered one-piece corners and lineal window trims to hide unsightly edges of just about every siding you're installing. Fiber cement, vinyl, wood composites, even wood, all tuck in behind our special cut-away, creating an easier and aesthetically more appealing way to finish off the siding. Stealth Trim System. Only from Versatex.

For FREE info go to <http://pb.ims.ca/5650-4>

we're trimming installation time

VERSATEX

www.versatex.com

(724) 266-7928

LOW MAINTENANCE CELLULAR PVC TRIM



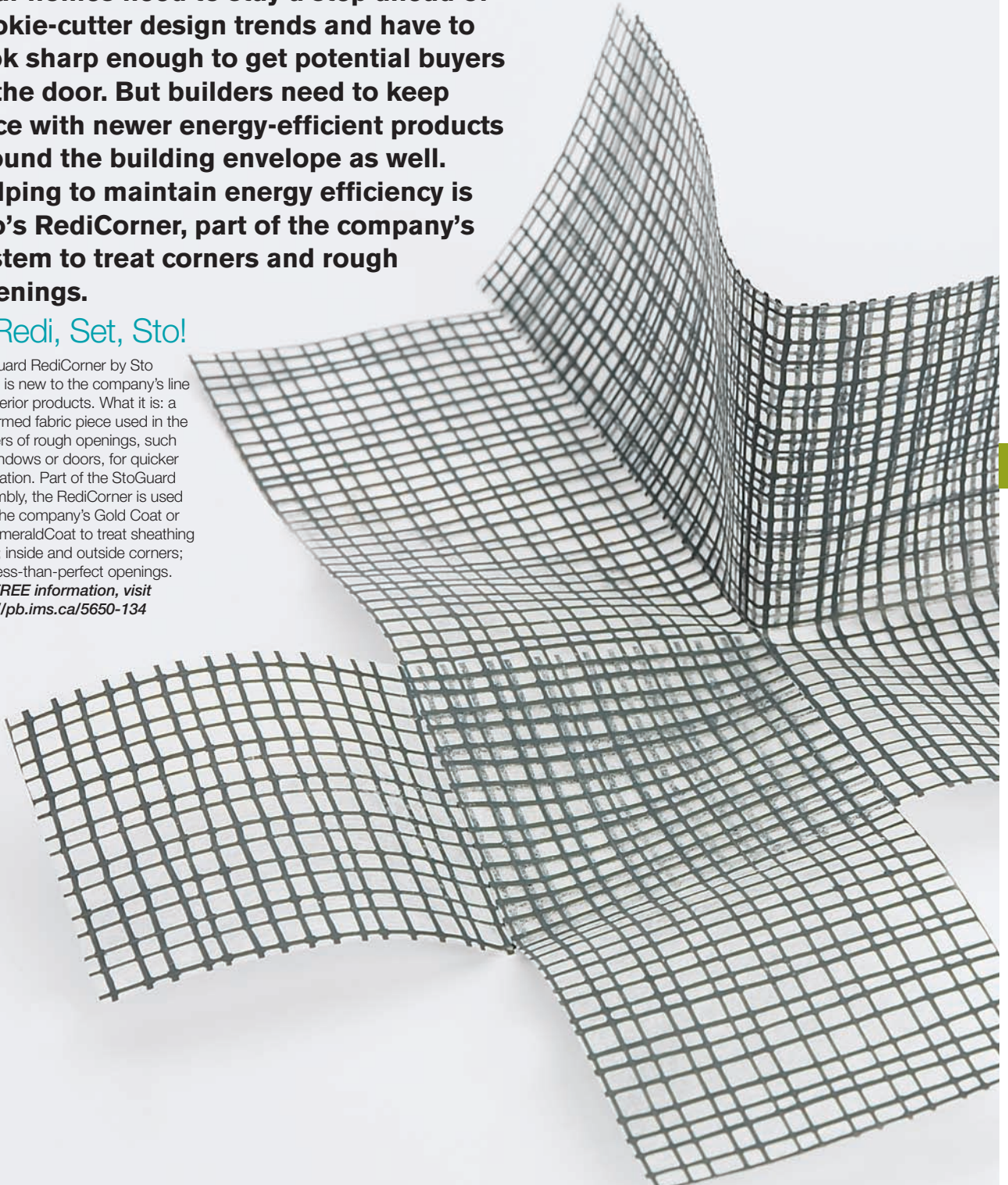
Exteriors

Your homes need to stay a step ahead of cookie-cutter design trends and have to look sharp enough to get potential buyers in the door. But builders need to keep pace with newer energy-efficient products around the building envelope as well. Helping to maintain energy efficiency is Sto's RediCorner, part of the company's system to treat corners and rough openings.

A Redi, Set, Sto!

StoGuard RediCorner by Sto Corp. is new to the company's line of exterior products. What it is: a preformed fabric piece used in the corners of rough openings, such as windows or doors, for quicker installation. Part of the StoGuard assembly, the RediCorner is used with the company's Gold Coat or Sto EmeraldCoat to treat sheathing joints; inside and outside corners; and less-than-perfect openings.

For FREE information, visit
<http://pb.ims.ca/5650-134>



Pest Exteriors



B Flame Dancers

You have to admit this looks hot. Designed solely for dramatic effect, Travis Industries' new Tempest Gas Torch is made for outdoor living spaces; front walkway pillars; a mounting on deck posts or stone pillars; and anywhere else homeowners want to add a touch of fire. The ceramic glass housing directs oxygen to help create the spiral-like presentation. **For FREE information, visit <http://pb.ims.ca/5650-135>**

C Carrying the Weight of the Roof

Builders looking for the retro-inspired feel of slate on their roofs but not wanting to pay for it should take a gander at Atlas Roofing's Storm-Master Slate shingle line. The new product is part of the Platinum Package in the Atlas Signature Select Roofing Program of complete roofing systems. The shingles carry a lifetime limited warranty and have a full swath of designer colors available. **For FREE information, visit <http://pb.ims.ca/5650-136>**

D Smart Keys, Safe House

Part of the company's latest security offerings, Kwikset's SmartKey features a proprietary patented side-locking bar that replaces the traditional pin and tumbler designs. SmartKey locks can be easily re-keyed in 30 seconds or less and eliminate many of the hassles and complexities associated with re-keying. **For FREE information, visit <http://pb.ims.ca/5650-137>**

E Beautiful Stones

The BellaStone Architectural columns made by Crane feature the texture of quarried stone without the need of a professional stonemason on the installation. The new product line uses Crane's low-maintenance dimensional non-masonry stone technology in a durable column design for landscaping, fencing and porch railings. **For FREE information, visit <http://pb.ims.ca/5650-138>**

Pest Exteriors



F



G



H



J

F No Worries About April Showers

Subterra Stone, the latest addition to the Belgard Environmental series' line of permeable concrete products from Oldcastle Architectural, has technology that enables rainwater to drain, whereas traditional paver products merely allow water to runoff. Subterra uses a 9½ percent void ratio, allowing rainwater to naturally drain through the paver into native soils. **For FREE information, visit <http://pb.ims.ca/5650-139>**

G Bring Back the Porch

Available since April, Azek's new porch plank product provides an easy-to-clean surface that resists stains, moisture, scratches and fading. The planks can be used in covered or uncovered areas too because they expand and contract less. The tongue and groove 1-foot by 4-foot planks install easily with traditional woodworking tools and are up to 40 percent lighter than wood composites. **For FREE information, visit <http://pb.ims.ca/5650-140>**

H You're a Star, Kid

If you've ever lived in a Ranch-style house made in the '50s, you know attics can turn into ovens in the summer. The EcoVent is a continuous tile-over-ridge vent that sits under the hip and ridge tiles to efficiently remove hot, moist air from the attic of a building. Made by EcoStar, it is manufactured in 20-foot long by 10½-inch wide rolls for more coverage. **For FREE information, visit <http://pb.ims.ca/5650-141>**

I My, What A Big Fence You Have

Using a new technology by blending post-consumer cardboard and plastic, FiberTech's TimberWolf wood-plastic composite fencing components include 6-foot dog-eared pickets, posts and backer rails. According to the company, these components enable fences to be built in a variety of styles. **For FREE information, visit <http://pb.ims.ca/5650-142>**

J High-Tech Decks

Offered in 12-, 16- and 20-foot lengths, TimberTech's new XLM decking planks are made from an advanced low-maintenance polymer decking material that uses a proprietary blend of mineral enhancements for structural integrity. The grooved planks work with the company's stainless steel hidden fasteners. **For FREE information, visit <http://pb.ims.ca/5650-143>**

Pest Exteriors

K



I4



L



M



N

K Building Green

The new formula used in Timber Products' Green T hardwood plywood panels sets the panels apart from other wood-based panels. These panels are made with three of the company's proprietary core materials: 100 percent post-industrial wood fiber and formaldehyde-free Green T Arreis MDF; the Green T Veneer Core; and Green T Particle-board Core. The panels meet or exceed LEED standards. **For FREE information, visit <http://pb.ims.ca/5650-144>**

L Roofing to the MAXX

Cosella Dorken's Delta MAXX Titan brings new technology to the roofing industry. Its roof underlayment is weatherproof and vapor-permeable. The silver titanium surface bounces back and reflects up to half of the sun's sweltering heat. And a woven polyester bottom layer soaks up any moisture that penetrated. **For FREE information, visit <http://pb.ims.ca/5650-145>**

M Defend Your Decks

Debuted at the 2008 International Builders' Show, The Trex Accents Fire Defense decking collection from Trex features new flame retardant technology developed for outdoor living spaces that are vulnerable to fires. The planks are self-extinguishing, even under extreme heat and flames. Like the original Trex Accents, the Fire Defense planks are reversible with either a wood grain or a smooth finish. **For FREE information, visit <http://pb.ims.ca/5650-146>**

N A Lifeline for Roofs

In addition to new tile profiles, MonierLifetile offers its Energy-Efficient Roofing (EER) System, which consists of a combination of the company's products that increase cross-ventilation, as well as the overall performance and integrity of the roof. These products include the Vented Eave Riser, Elevated Battens, and the company's hip and ridge products. **For FREE information, visit <http://pb.ims.ca/5650-147>**

Pest Exteriors



Stealthy Siding

Designed to match most fiber cement siding products, the PVC Stealth Skirt Board made by Versatex is a multi-purpose frieze board or starter strip designed for all sidings. The 3/4-inch-thick plank features a tapered edge that allows water to run off. The skirt boards come in 3/4 by 6-inch and 3/4 by 8-inch widths in 18-foot lengths. **For FREE information, visit <http://pb.ims.ca/5650-148>**



Roofer-Friendly

Chosen for its contractor-friendly design and new lightweight technology, CertainTeed's synthetic slate Symphony Shingles are easy to install. They require no special installation tools and can be fastened by hand nailing or using a pneumatic nail gun. The shingles have excellent weathering qualities; withstand foot traffic and cold temperatures; and resist curling and buckling. **For FREE information, visit <http://pb.ims.ca/5650-149>**



Beneath the Juniper Trees

The Juniper collection is a unique organic cedar composite decking material made from heartwood cedar fibers that stem from Juniper Mexicana or Texas Cedar. Made by A.E.R.T., the new product line has a deep wood grain and uses 90 percent pre- and post-consumer recycled content. According to the company, it is extremely moisture-resistant. **For FREE information, visit <http://pb.ims.ca/5650-150>**

15



Quality and Reliability Since 1955



When You're Looking for a Manufacturer of
All VINYL, Seasonal to Year-Round Sunrooms

The Choice is Joyce!

FEATURING THE LEISURE ROOM® 2600

The new all vinyl, year-round Leisure Room® 2600 highlights include 7/8" IG LoE³ with argon gas, dual sash operation, full screens, three color choices (white, clay and beige) and our industry leading Lifetime Transferable Warranty.

For more information on the superior products and opportunities at Joyce, Contact Gary Winkler at 800.824.7988 Ext. 254 or visit www.joycemfg.com.



www.joycemfg.com • 800.842.7988

Building Our Reputation, One Room at a Time®

For FREE info go to <http://pb.ims.ca/5650-5>

Pest Exteriors



S Take Shelter

With no custom designs or one-off fabrications needed, Feeney Architectural's new Lightline canopy line provides over-door protection for entry, patio and side doors where space is a concern. The canopies, popular in Europe, have stainless steel support arms, integrated aluminum gutters and UV-resistant acrylic visor panels in clear or frosted finishes. **For FREE information, visit <http://pb.ims.ca/5650-151>**

R Rough But Cool

Recreated from natural stones, Eldorado Stone's RoughCut mimics limestone with embedded artifacts and other natural-looking elements for a great amount of variation. The stones range in size from 1½ inches to 11 inches high and from 2 inches to 18 inches long. Colors range from golden to earthen-browns. **For FREE information, visit <http://pb.ims.ca/5650-152>**

T Nailed It

The latest siding panel from Nailite is the Cedar Pride EZ, which features a striking bold grain pattern and deep textures. Made from molded polypropylene, the 9- to 9½-inch shingle exposures look like staggered split shake and come in 17 colors and three premium shades. **For FREE information, visit <http://pb.ims.ca/5650-153>**

WHAT IF YOU Could...



Have your computer send out multiple requests for proposals to vendors, and then automatically populate your bid after choosing the best quote?

Now you can!

Using the new **Material eQuote** feature, send and receive request for proposals to and from vendors, then select the best quote to use in your bid. Take advantage of this new tool in Quick Bid 4.8 from On Center Software!



**www.oncenter.com
1.866.627.6246**

For FREE info go to <http://pb.ims.ca/5650-6>

TEST: DO PRODUCTS MADE WITH ULTREX SHIP BETTER THAN VINYL?

RESULT: NO DAMAGE, NOTHING MISSING, NOT EVEN A PIT STOP.



ONLINE VIDEO FEED

TEST: 522-814 DELIVERY



Carl

Official Product Testers

STU

PRODUCT: NEW WOOD-ULTREX® CASEMENT with Stone White Finish

If time is money, waiting for some vinyl windows to show up – or replacing them because of callbacks – means you're getting robbed. Going with Integrity® windows and doors gives you peace of mind, in the form of a 99.2% fast, on-time, complete and damage-free delivery record*.



At Integrity, we approach every aspect of our business – especially our impact on the environment – by asking how we can do things better. Then we do it.



For FREE info go to <http://pb.ims.ca/5650-7>



Integrity scored highest overall for complete and on-time delivery and highest among builders for undamaged delivery in the 2007 BICA Awards.

Integrity
from MARVIN
Windows and Doors

Watch the test videos and take the Carl & Stu Challenge at
WWW.INTEGRITYWINDOWS.COM

For a catalog or your nearest dealer call 1-800-687-6661

Built to Perform



BUILD A BEAUTIFUL Reputation With Us

When you build homes that feature a sleek, stylish Rinnai LS Series tankless water heater, you're creating more than just an extraordinary home - you're building a beautiful reputation.

Your clients get hot water when they need it, higher energy efficiency and the peace of mind that comes with being environmentally responsible. You get a flexible, reliable and easy-to-install water heating solution that's as beautiful on the outside as it is innovative on the inside.

Learn more about today's **first choice** in tankless water heating appliances.



Rinnai
TANKLESS WATER HEATERS


Call 1-800-621-9419
or visit
www.rinnai.us
www.foreverhotwater.com

© 2008 Rinnai Corporation

For FREE info go to <http://pb.ims.ca/5650-8>



Interiors



According to the U.S. Census Bureau and the NAHB, smaller houses and changing lifestyles mean ceilings are rising and formal living rooms are disappearing, replaced by great rooms opening to a kitchen or a smaller room, such as a den, music room or office. Because these rooms get more traffic, you'll need something like Armstrong Floorings' StrataMax layered sheet floors, which offer superior stain- and scratch-resistance.

A No Glue Needed

Armstrong Flooring's new StrataMax layered sheet floors require no glue and are billed as a true loose-lay floor product. And they won't buckle due to climate changes either. The flooring can even be installed loosely laid over OSB. It offers great stain and scratch resistance and meets or exceeds low emission standards. *For FREE information, visit <http://pb.ims.ca/5650-154>*

Pest Interiors



20

B A New Hybrid

The advanced Eterna Hybrid water heater from Grand Hall brings advanced technology to the market. The Eterna Hybrid water heater works on the principle of counter flow, with cold water entering from the bottom of the tank and a top mounted turbo burner that forces heat down. According to the company, it achieves an impressive 86-percent thermal efficiency. **For FREE information, visit <http://pb.ims.ca/5650-155>**

C Amish Look, Modern Technology

Bringing the look of hand-scraped Amish flooring to all price points is HomerWood's new Character Grade engineered floors. Boards measure 5/8-inch thick and planks are made in 1--foot random lengths with micro-beveled edges for a smooth appearance. Widths are 3 to 6 inches. **For FREE information, visit <http://pb.ims.ca/5650-156>**

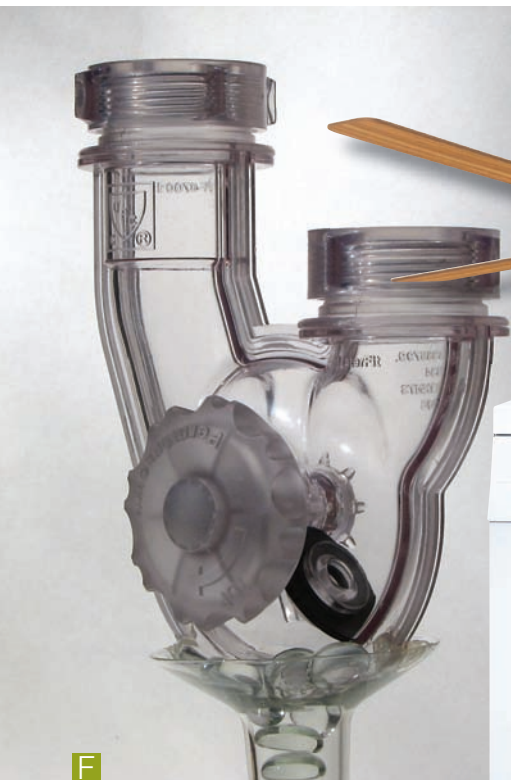
D Omnipotence in Thermostats

The new technology behind HAI's OmniStat2 keeps precise temperature and humidity in the home. Using an advanced feature, the OmniStat2 actually "learns" the home's heating and cooling patterns and adjusts controls to maximize the installed HVAC system. A seven-day program feature is included. There are two models for different heating and cooling systems from which to choose. **For FREE information, visit <http://pb.ims.ca/5650-157>**

E Forever Pure

Chilled and hot water come on-demand with Everpure's Helia Hot & Chilled Water Appliance. The new unit is ideal for kitchens or wet bars where space is a premium; it measures 16 inches tall by 16 inches deep and 10 inches wide. It operates quietly and pumps 6½ gallons per hour. **For FREE information, visit <http://pb.ims.ca/5650-158>**

Best Interiors



F

F I Can See Clearly Now

PF WaterWorks' cool new innovation in plumbing is the PermaFlow combination P-trap replacement and drain management system. It is made out of clear plastic, so problems can be seen and remedied quickly. The inlet and outlet pipes on the system are also angled to increase flow to break up and propel debris away.

For FREE information, visit <http://pb.ims.ca/5650-159>



G

G Hunting for Hunter

Hunter's new Perfect Balance fans use the company's new balancing technology. Heavier blades are balanced on the new Control Ring, which automatically senses changes in weight or balance and shifts blades accordingly so there's no wobble. The product is Energy Star-rated and is available in flush, standard or angle mounting. **For FREE information, visit <http://pb.ims.ca/5650-160>**



H

H Stack, Wash and Dry

The new 24-inch Axixx Laundry line from Bosch offers the largest front-loading washer in its class. According to Bosch, the line can wash up to 14 pairs of jeans at a time. The Logixx computer system runs the wash cycle, conserving water and monitoring clothes at the same time. The companion Condensation Dryer does not require any ducts or vents. **For FREE information, visit <http://pb.ims.ca/5650-161>**



I

I Naturally Yours

Omega Cabinetry's new Natural Resin Insert Collection features ten panel inserts made with natural and decorative materials. These are fused into a translucent resin to use with the company's various custom and semi-custom door styles for added ambiance. Two new finishes are also available. **For FREE information, visit <http://pb.ims.ca/5650-162>**

Pest Interiors



2.2

J Bella Belo

Delta's next-generation Diamond Seal Technology features the new Belo faucet line from Brizo. The faucet sports a four-function pullout wand with adjustable flow controls. The MagneDock magnetic docking technology uses a powerful magnet to secure the wand into the faucet spout. **For FREE information, visit <http://pb.ims.ca/5650-163>**

K Look Under the Hood

Broan's new QDE Series of range hoods joins the green movement by providing Energy Star-rated ventilation. The hoods features a two-speed rocker switch huffed in an under-cabinet design. It moves air at 280 cubic feet per minute and uses a vertical or horizontal discharge. Light is provided by dual 13-watt CFL bulbs. **For FREE information, visit <http://pb.ims.ca/5650-164>**

L A Clean Viking is a Happy One

Touted as recyclable, hypoallergenic and colorful, the new all-metal cabinets from St. Charles Cabinetry come in 23 powder-coated colors. St. Charles, a division of Viking Range Corporation, made the doors cold-rolled steel doors frameless and full-overlay with soft-close hinges and slides. Colors include matte, iridescent and designer shades. **For FREE information, visit <http://pb.ims.ca/5650-165>**

M Commercial Grade for the Home

Sporting a sleek, modern design, Rinnai's new commercial-grade LS Dual-Use Tankless Water Heater increases hot water output. The unit's EZConnect system allows two units to work in tandem and an integrated condensate collector is included for interior models. The heaters are backed by a 12-year heat exchanger limited warranty. **For FREE information, visit <http://pb.ims.ca/5650-166>**

Pest Interiors



N

N Just Jot it Down

Homeowners always need a spare piece of paper and a pen at exactly the wrong time. The Whirlpool/Amana's new Jot refrigerator solves this. The fridge has a dry-erase finish on the door panel so occupants can leave each other notes and/or play tic-tac-toe. Amana has partnered with Crayola to include the blue and black Dry Erase markers with each Jot. **For FREE information, visit <http://pb.ims.ca/5650-167>**



O

O A Whirlpool for Your Laundry

A large sweater or another challenging delicate washable is cared for with MTI's Laundry Sink, now available under-mounted or flush-mounted. The Gentle Jet technology uses micro jets to thoroughly launder clothes without harsh agitators. A three-speed control knob handles jet speed. The sinks measure 25 by 22 by 11½-inches. **For FREE information, visit <http://pb.ims.ca/5650-168>**



P

P We Have Fusion

Gaggenau's BM 281-711 Fusion Oven combines new technology improvements with a sleek new construction. The ovens use the company's Innwave convection to evenly disperse heat. Variable energy outputs save energy and penetrate food to its core. Gaggenau says food will never be cooked on the outside while still frozen within. **For FREE information, visit <http://pb.ims.ca/5650-169>**



Q

Q Sound of Mind

Following in the footsteps of the AIM 8 series, SpeakerCraft's AIM WIDE wide-dispersion speakers feature several technological advances and are built for multi-room audio installations. The speakers feature dual one-inch tweeters and dual two-inch mid-range drivers set at a 70-degree angle for a dispersed sound field. **For FREE information, visit <http://pb.ims.ca/5650-170>**



Interiors

R



S



S Double the Luxury

New to the states and to the company, the Double Wall Oven by Electrolux uses the company's Luxury Glide ball-bearing oven racks that extend with the touch of finger. The Wave-Touch control panel keeps controls hidden, and the Perfect Turkey button makes Thanksgiving a snap. **For FREE information, visit <http://pb.ims.ca/5650-171>**

T At Home in the Kitchen or the Bar

This little number by Marvel is the new Keyhole Sink. Made for kitchen islands, wet bars or outdoor living areas, the Keyhole features a large, round bowl for rinsing and a deep, recessed drainer for prep and clean-up. The Marvel is available in two sizes, including a single main bowl size with a 17-inch diameter or a main bowl coupled with a second bowl size of 11-¹³/₁₆ x 6-³/₁₆ inches. **For FREE information, visit <http://pb.ims.ca/5650-173>**

R The Master of Cool

Homeowners looking for a smarter way to keep perishables from perishing can turn to the Master-Cool line from Miele. The unit's controls automatically optimize the SmartFresh full pullout storage drawers by varying the humidity levels and precise temperatures. Touch controls work well for all users, regardless of height. **For FREE information, visit <http://pb.ims.ca/5650-172>**



T



E'LL NEVER STOP INNOVATING.
AND NEVER START COMPROMISING.

Moving the industry forward is the responsibility of its leaders. That belief has given rise to many innovations at MonierLifetile; like our new Energy Efficient Roof System, that includes installation-enhancing products like Elevated Battens, Vented Eave Risers and Figaroll Vented Ridge Guard. When these are combined with our concrete roof tile, they result in reduced energy costs and a structurally superior roof. Innovations like these further reinforce our belief that as the leader we must strive to perfect not only a roof's aesthetic form, but also its primary function. Only then can we expect to provide our customers with tile roofing solutions unmatched by any other roof company. Call 1-800-571-TILE (8453) ext. 443 or visit www.monierlifetile.com.

For FREE info go to <http://pb.ims.ca/5650-9>

1-800-571-TILE (8453) ext.443
www.monierlifetile.com



MonierLifetile
Changing the way people think about roofs.

Pest Interiors



U Efficient Heating

Made as a companion to the larger QFP44, the QFP38 gas fireplace by Quadra-Fire combines a large viewing area with a realistic flame. The authentic firebox allows homeowners to turn down their thermostats and is perfect for spot heating. The fireplace boasts 80 percent efficiency. **For FREE information, visit <http://pb.ims.ca/5650-174>**

V Invoke the Evoke

Kohler's Evoke line is a unique expansion of the primary and secondary single-control swing-spout model, which has an optional side spray. Unlike standard side sprays, the Evoke side spray has two features: a spray as well as a laminar flow, which make it easier for the homeowner to wash dishes. **For FREE information, visit <http://pb.ims.ca/5650-175>**



W HDMI in the House

New technology abounds in Linear's 4 by 4 matrix device. It allows users to view any four HDMI sources on four video displays. Switchers include 3 by 1, 4 by 1, 2 by 2, 2 by 4, and 4 by 2 configurations. Distribution Amplifiers are available in 1 by 8 and 2 by 8 configurations. Accessories include boosters for enhancing the video signals over long runs. **For FREE information, visit <http://pb.ims.ca/5650-176>**

The Demilec Spray Foam Advantage

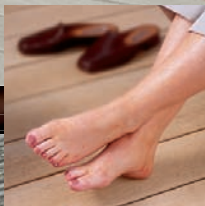
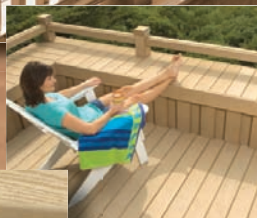


Bee Green

Our goal is to provide you with all the tools to construct a healthy, energy-efficient building with the most positive impact on the environment. Our commitment ensures a healthy tomorrow.



1.877.336.4532
www.demilecusa.com



*If you do get
a customer*
CALL BACK,
*chances are,
it'll be full of*
PRAISE.

Latitudes, the deck with the
Equator® Hidden Fastener system.



www.latitudesdeck.com/pbd
888.500.7704

For FREE info go to <http://pb.ims.ca/5650-11>



Mechanical & Electrical

A We're a Fan

New fan controls from Fantech up the ante in ventilation. The Ventech Controls consist of one main control and up to four auxiliary controls. A special 20-minute high-speed boost cycle helps meet immediate needs and the Infinite Speed Control adjusts speeds during normal operation. **For FREE information, visit <http://pb.ims.ca/5650-177>**

Homeowners want control of their home and are getting it thanks to home automation. The ERV, made by Panasonic and shown here, has several models for automation applications; there are more powerful units for whole-house operation, too. The demand for home control solutions such as smart HVAC systems and remote home monitoring has already reached a similar level in Europe as in the United States – thanks in part to rapid market growth fueled by the popularity of home networks.



Mechanical & Electrical



B



D



C



E

B Plugged In

Representing a new product line and an advance in home wiring, the 360 Electrical Duplex Outlet from 360 Electrical allows large plugs to connect easily with the rotating top and bottom sockets. The outlets stay powered during rotation. The units fit standard wall boxes. Snap-on wallplate included. **For FREE information, visit <http://pb.ims.ca/5650-178>**

C Upgrade Your Protection

Eaton's Fire-Guard combination-type AFCI is now listed in the National Electrical Code and part of a new product line. The Fire-Guard combines the parallel arc detection (line-ground and line-neutral) of the existing branch type AFCI with low-level series arc detection in connected cords. **For FREE information, visit <http://pb.ims.ca/5650-179>**

D Mix Like a Pro

Sporting a host of innovations and improvements, the four new modular proPanel mixing units from Uponor come fully assembled and wired with Cat-5 or RJ45 connectors, allowing them to meet the needs of any radiant application. The units make connecting multiple panels to a single hydronic controller a simple plug-and-play operation. **For FREE information, visit <http://pb.ims.ca/5650-180>**

E A Shout Out for the WhisperComfort

New technology for your home HVAC concerns is provided by Panasonic's WhisperComfort Energy Recovery Ventilator (ERV). The ERV has several models for spot applications and more powerful units are made for whole-house operation. The fan features a frost prevention mode that cycles between exchange air and exhaust only air to prevent core freezing. **For FREE information, visit <http://pb.ims.ca/5650-181>**

Mechanical & Electrical



F

G

H

F A Different Kind of Hybrid

The Hybrid Electronic Air Cleaner by Johnson Controls' York division uses a specialized electrical field to ionize particles and a trapping system to clean 97.8 percent of particles that measure 3 to 10 microns; 95.7 percent of particles measuring 1 to 3 microns; and 92 percent of those measuring 0.3 to 1 micron. This advance in technology means the unit permanently traps and kills airborne and settled bacteria and spores. **For FREE information, visit <http://pb.ims.ca/5650-182>**

G Generating Success

Standby generators are all the rage in power management, and adding to the competition comes Generac's 20 kW air-cooled residential power generator. The unit can handle all circuits when equipped with the company's Power Manager LTS panel, including central air and other sensitive electronics. **For FREE information, visit <http://pb.ims.ca/5650-183>**

H Dual Fuel Rules

Featuring the company's Silent-Comfort technology for quiet, consistent heating, Lennox's G71P Variable-Capacity Gas Furnace can be combined with an electric heat pump for fuel efficiency by alternating between electric and gas heat. The unit's Duralok Plus Heat Exchanger is made of ArmorTuf steel for durability. **For FREE information, visit <http://pb.ims.ca/5650-184>**



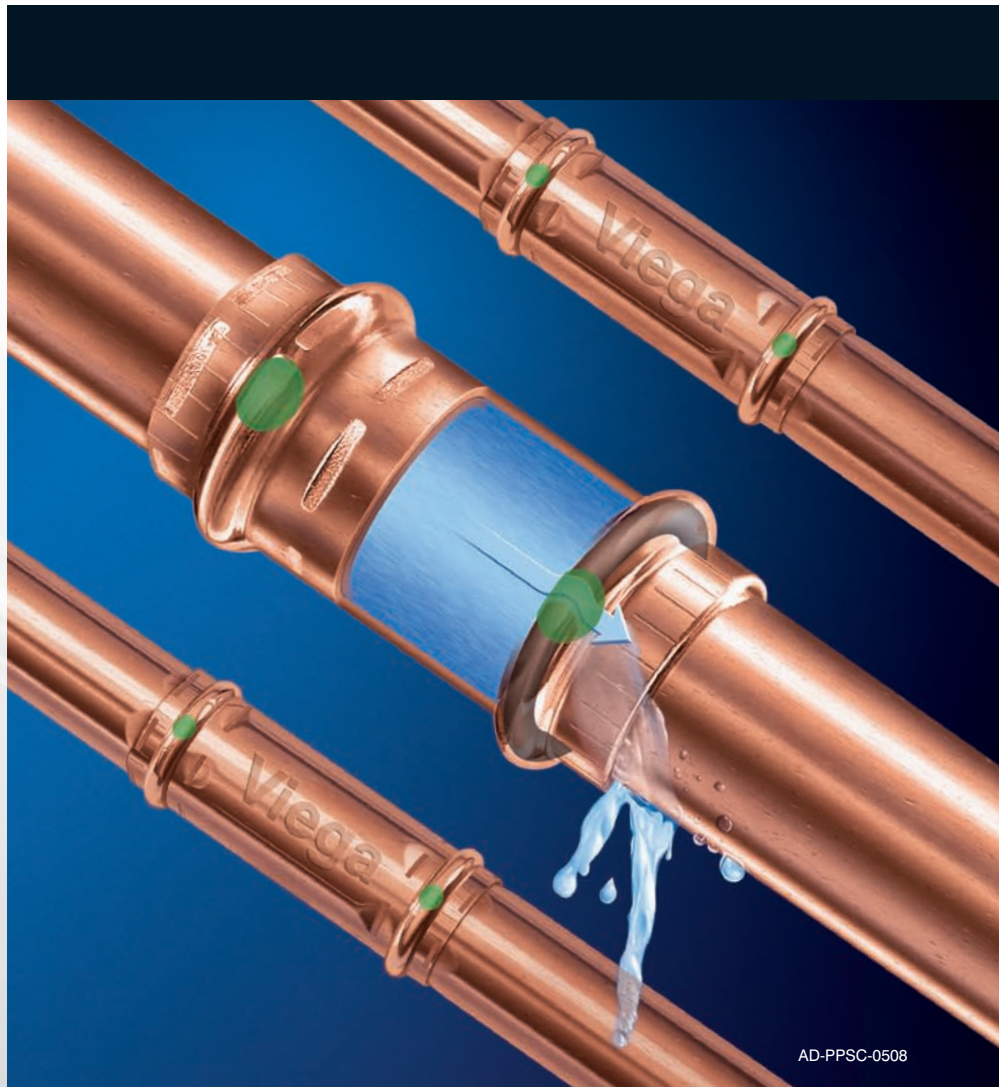
Guaranteed to leak... and that's a good thing.

Viega ProPress® System with patented Smart Connect® feature

Only Viega ProPress fittings and valves offer the patented Smart Connect® feature, a quick and easy way to identify connections that need pressing. During pressure testing, water flows past the sealing element indicating an unpressed fitting. Since 2001, the Smart Connect feature has assured hundreds of millions of leak-free connections for water and gas applications.

Imitators have tried to copy Viega ProPress, but if you don't see the Viega name and green spots, you're not getting the safety and security of the Viega Smart Connect feature. Discover the difference Viega quality makes on your next project.

For information contact us at
1-877-843-4262.



AD-PPSC-0508

VIEGA...THE GLOBAL LEADER IN PLUMBING AND HEATING SYSTEMS



WWW.VIEGA.COM

1-877-843-4262

For FREE info go to <http://pb.ims.ca/5650-12>



Millwork & Molding

The easy-to-install and maintain PVC millwork and molding pieces have been a boon to home builders and remodelers alike. "Our business has always been mostly about new construction, but now we're finding more and more customers who are calling us looking for ways to upgrade and modernize the homes they live in now. ... We've started to shift focus a little," says Suzanne Klemp of MillTech. Consider updating a tired stair design with these Lite-Iron balusters by Coffman Stairs, which have a hollow core to keep the weight down.

A Tough as Iron, Light as a Feather

An improvement to Coffman Stairs' Forged Iron Collection, the new Lite-Iron series offers bolder and lighter balusters. With a hollow core that reduces weight while maintaining strength, the series is available in standard ½-inch or ¾-inch sizes for a bolder look. The line includes a full range of finishes, styles and accessories. **For FREE information, visit** <http://pb.ims.ca/5650-185>

A man's profile is shown in a three-quarter view, looking upwards and to the left. On top of his head, several pieces of yellow and orange construction equipment are balanced, including a skid steer loader, a backhoe loader, and a front loader. The background is plain white.

CONSTRUCTION EQUIPMENT purchases weighing heavily on your mind?

Let BuyerZone take a load off.

Get free advice, pricing articles, ratings and quotes on all your business purchases, anything from skid steer loaders, to aerial lifts, to air compressors and more. BuyerZone will help you make the right choice for your company and your budget, free of charge. At BuyerZone, you're in control. We're just here to make your work easier.

Join the millions who've already saved time and money on many of their Construction Equipment purchases by taking advantage of BuyerZone's FREE, no obligation services like:

- Quotes from multiple suppliers
- Pricing articles
- Buyer's guides
- Supplier ratings
- Supplier comparisons

REQUEST FREE QUOTES NOW!

**Call (866) 623-5448 or visit
BuyerZoneConstruction.com**

BuyerZone
Where Smart Businesses Buy and Sell

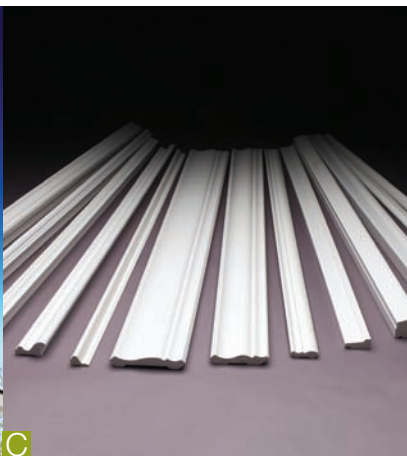
A division of
 Reed Business Information.



Millwork & Molding



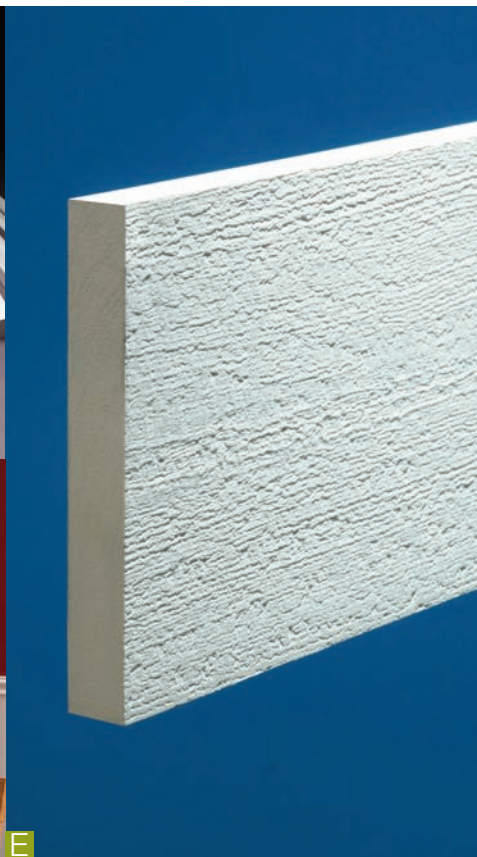
B



C



D



E

B Classic Appeal

Designed for quick and simple installation for both interior and exterior applications, the new product line called the Arts & Crafts Collection from Crown Column & Millwork by Visador instantly bring ageless appeal to surrounding spaces. The collection comes in multiple dimensions and lengths in both cPVC and most wood species. **For FREE information, visit <http://pb.ims.ca/5650-186>**

C Trimming Down

One of the biggest players in the PVC trim game is KOMA Trim Products. One of their latest additions is the Allure Collection of extruded moldings. Each profile is produced with the same Celuka technology as the company's trim boards. The collection has nine standard moldings and four specialized versions. **For FREE information, visit <http://pb.ims.ca/5650-187>**

D Parkland Performance

Designed to make way for minor variations in top-to-bottom heights on wainscot jobs, the new PolyMAX Wainscot system and plank product from Parkland Performance Walls & Ceilings is a waterproof PVC product. The system consists of reversible 6-inch planks featuring two different patterns, base molding with a built-in moisture seal and chair railing. **For FREE information, visit <http://pb.ims.ca/5650-188>**

E Certainly Millwork

CertainTeed's Restoration Millwork line has a significant improvement in six new profiles, 12-foot length trimboards and 1½-inch sheets and trimboards. Available in the company's smooth or TrueTexture finishes, the new 12-foot trimboard now comes in eight sizes for easier handling and transportation. All of the products cut, shape, rout and mill with ordinary woodworking tools and fasten with nails or screws. **For FREE information, visit <http://pb.ims.ca/5650-189>**



Paints, Caulks & Sealants

If you're not using zero-VOC paint or other eco-friendly alternatives, you're missing out on capturing a large chunk of the population who need (rather than just want) non-toxic formulas on their walls. The Freshaire Choice Paint, made by ICI Paints, is just one of the many new formulas out there. After all, homes with small children and people with allergies or asthma are particularly vulnerable to off-gassing from older paints.

A Green Paint Comes in Red, Too

ICI Paints' Freshaire Choice Paint increases the competition when it comes to green. The formula is zero-VOC — and free of that terrible new-paint smell — and comes in 65 colors and three different sheens for interior, ceiling and primer applications. The can itself is recyclable, and even the label sports greenness: it's made from 75 percent recycled fiber and is printed with soy ink. **For FREE information, visit <http://pb.ims.ca/5650-190>**



Paints, Caulks & Sealants



B Seal In the Flavor

Henkel Corporation introduces the Polyseamseal EST Speed Seal, a 100-percent silicone kitchen and bath sealant. The new features include an enhanced ultra-fast-dry system ideal when using bathrooms and kitchens as soon as possible is essential. It'll leave your customers singing in the shower in just two hours after application. **For FREE information, visit <http://pb.ims.ca/5650-191>**

C Resilient Resistance

Formulated with Sherwin-Williams' MoistureGuard, the new Resilience product line resists moisture while curing in about half the time of most conventional exterior paints. The Resilience can be used on masonry, concrete, steel stucco, vinyl and wood. The company also has 250 new shades organized into 10 color families. **For FREE information, visit <http://pb.ims.ca/5650-192>**

Blue

the essential element for building solutions

Energy Efficiency | Protection Management | Performance Systems

Different climates. Various construction techniques and codes. Budgets of all sizes. One solution simply cannot meet all these challenges. That's why Dow Building Solutions provides more than a breadth of products. We bring you true depth in building science expertise. Our consultative representatives are ready to work with you to develop no-nonsense solutions tailored specifically for how and where you build. After all, everything has to work together. Which is precisely how the best solutions are achieved. By working together.



Dow Building Solutions

1-866-583-BLUE (2583)

www.insulateyourhome.com

®™ Trademark of The Dow Chemical Company ("Dow") or an affiliated company of Dow.

™ The color BLUE is a trademark of The Dow Chemical Company

For FREE info go to <http://pb.ims.ca/5650-14>



Structural, Insulation & Housewrap

Like the latest structural, insulation and housewrap products to hit the market, Simpson Strong-Tie's THJU U-shaped hip/jack hanger, shown here, focuses on structural integrity and offers new and more efficient ways to approach the stick building method. The unique configuration of the THJU hanger allows it to handle both right- and left-hand hips.

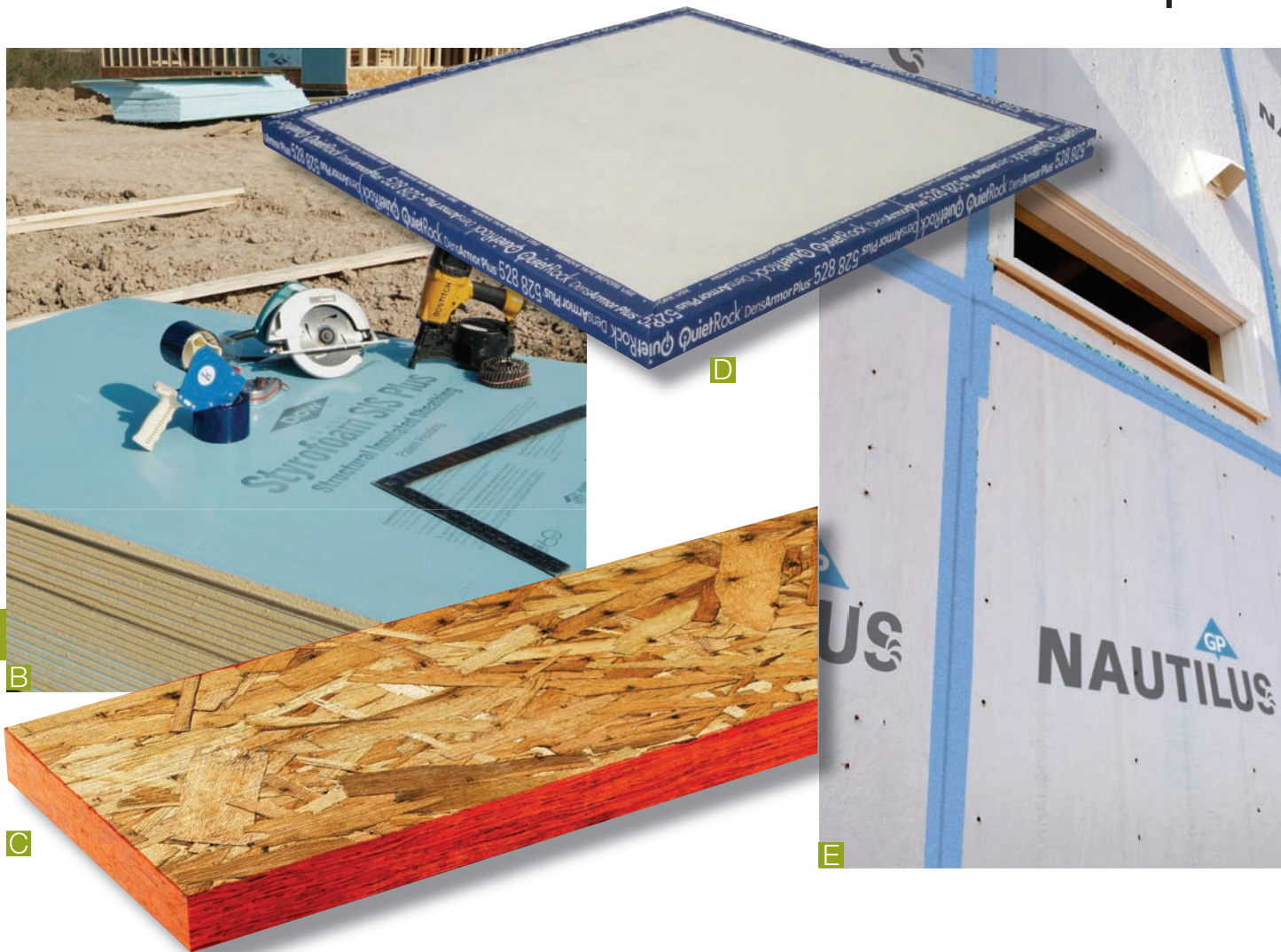
A Too Hip to Be Square

Simpson Strong-Tie's THJU U-shaped hip/jack hanger is the latest structural and connecting product from the company. You get great design flexibility because it works for right- and left-hand hips. Order it to fit a range of hip skews (up to 65 degrees) as well as various single and 2-ply hip/jack combinations. **For FREE information, visit <http://pb.ims.ca/5650-193>**

A



Structural, Insulation & Housewrap



B The Skinny

A new addition to Dow's Styrofoam line, the Structural Insulated Sheathing Plus sheathing panels combine structural, insulation and weather barrier properties in one product. The structural sheathing material is attached to a polyisocyanurate foam insulation that is covered by resilient exterior skin that reduces heat and energy loss. **For FREE information, visit <http://pb.ims.ca/5650-194>**

C A Solid Start

Made from fast-growing northern hardwoods and certified by the Sustainable Forestry Initiative, LP Building Products' SolidStart LSL is a new wood product line made from compressed thin wood strands protected with both end- and edge-seals. The product offers a dimensional strength of 1.75E and, according to LP, outperforms dimensional lumber. **For FREE information, visit <http://pb.ims.ca/5650-195>**

D A Quiet Solution

Using both Georgia-Pacific's DensArmor Plus with its own QuietRock soundproof drywall, Quiet Solution's new QuietRock DensArmor Plus 528 combines the top moisture, fire and mold resistance with excellent sound abatement properties. The product is 3/4-inch thick and hangs, installs and finishes like regular drywall. **For FREE information, visit <http://pb.ims.ca/5650-196>**

E All Wrapped Up

Georgia-Pacific's Nautilus is a new OSB wall sheathing product line. The wall sheathing panels feature a pre-applied weather-resistive barrier and tape-up using the Nautilus 3-inch-wide seam tape. The installation process is faster, according to Georgia-Pacific, thanks to the visible nailing guidelines and the elimination of a two-step sheathing/building wrap installation. **For FREE information, visit <http://pb.ims.ca/5650-197>**



Structural, Insulation & Housewrap



F Riders on the Storm

Made specifically for high-wind areas where impact resistance is a key design element, Typar's StormWrap has a significant advancement in its fiber-reinforced wrap. The extra fibrous materials provide extra protection against wind-borne projectiles, meet the standards of the Florida Building Code and ensure structural integrity. **For FREE information, visit <http://pb.ims.ca/5650-198>**

G Only the Strong Survive

A new advance in roughing in HVAC work is featured in Georgia-Pacific's XJ85 wood I-joists. The pre-cut openings are cavernously huge, are closer together and go all the way to the end of the beam. Although lightweight, the XJ85 joists provide great structural strength and can accommodate most building techniques. **For FREE information, visit <http://pb.ims.ca/5650-199>**

H Spray Your Cares Away

Spray-applied Sealection Agribalance by Demilec USA increases the alternative-based spray insulation competition. It goes on as a liquid, then expands up to 120 times its size to stuff every nook and cranny; stop air infiltration; and act as a noise barrier. It has a non-toxic spray foam formula, which, says Demilec, meets the intent of all building code requirements. **For FREE information, visit <http://pb.ims.ca/5650-200>**

I Vapor Foiled

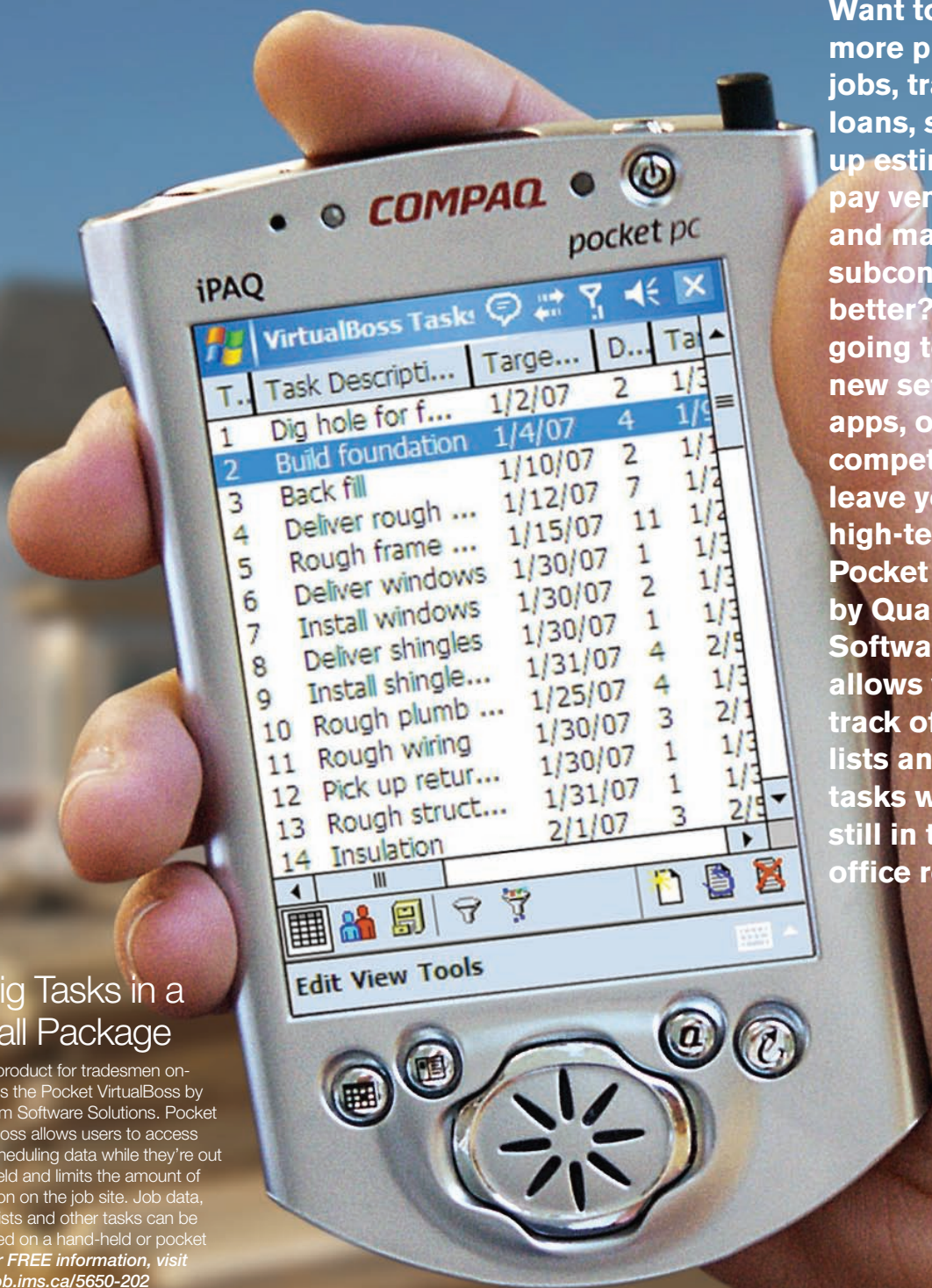
The multipurpose Flash & Foil by Fi-Foil represents a technological step forward as it combines the company's VR Plus Shield reflective insulation with spray foam insulation. According to Fi-Foil, the combination of foam and reflective air space effectively addresses all the modes of heat transfer. Flash & Foil can also function as a vapor retarder by specifying the standard or non-perforated version of VR Plus Shield. **For FREE information, visit <http://pb.ims.ca/5650-201>**

Pest Software

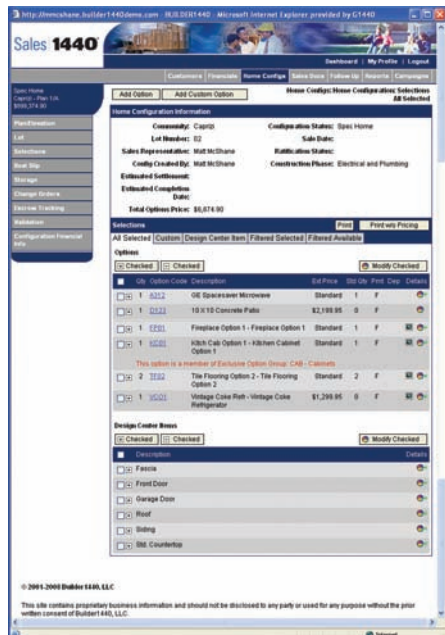
Want to take on more profitable jobs, track your loans, speed up estimates, pay vendors and manage subcontracts better? You're going to need a new set of killer apps, or the competition will leave you in its high-tech dust. The Pocket VirtualBoss by Quantum Software Solutions allows you to keep track of data, punch lists and other tasks while you're still in the field – no office required.

A Big Tasks in a Small Package

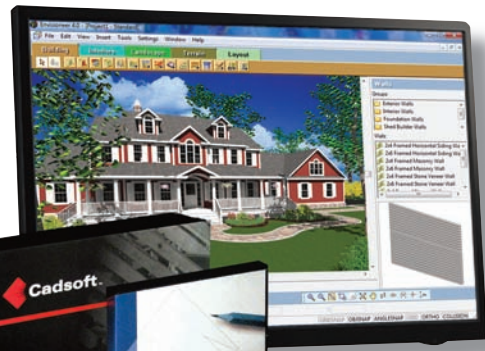
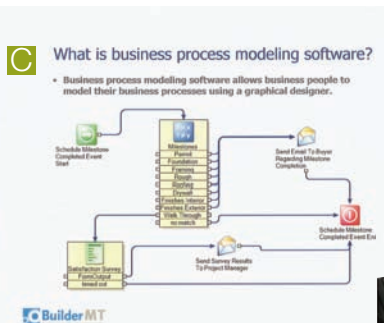
A new product for tradesmen on-the-go is the Pocket VirtualBoss by Quantum Software Solutions. Pocket VirtualBoss allows users to access their scheduling data while they're out in the field and limits the amount of confusion on the job site. Job data, punch lists and other tasks can be accessed on a hand-held or pocket PC. For **FREE** information, visit <http://pb.ims.ca/5650-202>



Pst Software



B



E

B De-Duped and Improved

Debuted at the 2008 International Builders' Show, Builder 1440's latest improvement comes bundled up in the Sales 1440 v. 6.2. The software is easier to use and has better reporting functionality as well as includes enhancements for advanced customer management and tracking. The system will even de-dupe any records that already exist within the system so sales teams can keep their records straight. **For FREE information, visit <http://pb.ims.ca/5650-203>**

C It's All in the Process

The latest innovation from BuilderMT is the Business Process Management software. The software provides a platform for studying operating costs by providing the visibility into business processes, allowing businesses to continually refine and remove costs from each process — what's on most builders' minds these days. **For FREE information, visit <http://pb.ims.ca/5650-204>**

D Quicker and On Center

OnCenter Software's Quick Bid 4.8 has a slew of improvements. Using the new Material eQuote feature, users can send and receive multiple requests for proposals to vendors and then automatically populate bids after choosing the best quote. The Bid Send feature securely shares your password-protected electronic bid information with multiple estimators. **For FREE information, visit <http://pb.ims.ca/5650-205>**

E They Have Vision

Billed as the easiest to use building information modeling software, Envisioneer 4.5 by Cadsoft caters to builders and contractors at all levels of residential construction. Users can generate plans, elevations, sections and details automatically from the 3-D model. The software also keeps track of materials used and can generate a detailed bill to keep you on budget. **For FREE information, visit <http://pb.ims.ca/5650-206>**



Construction Equipment & Tools

There's nothing like the gleam in subcontractors' eyes when you hand a new power tool to them – they're kids all over again. And now we have an old friend who's come back to play: Milwaukee Tools' Super Sawzall Reciprocating Saw. This Samurai of a tool is built for speed and efficient, accurate operation.

A It Saws All

It's got a new 15-amp motor and Constant Power Technology: Milwaukee Tools' Super Sawzall Reciprocating Saw is built for speed. The Quik-Lik blade change system and patented gear protecting clutch make operation a snap. To extend the life of the tool, the clutch guard absorbs high-impact forces that sudden blade lock-ups cause. **For FREE information,** visit <http://pb.ims.ca/5650-207>

42



A

Construction Equipment & Tools



B Attacking Tight Spaces

Little tool, big results. Fitting snugly into the palm of your hand, Ridgid's 12-volt Lithium-Ion Drill/Driver has new tech features including a full-size integrated $\frac{3}{8}$ -inch chuck with an 18-position clutch. The built-in LED illuminates the work area, and the 30-minute charger lets you keep going all day. **For FREE information, visit <http://pb.ims.ca/5650-208>**

C Drilling on a Diet

Specifically designed for overhead drilling where dust exposure should be avoided is Bosch's new 11250VSRD Dust Collection Rotary Hammer. The new product tips the scales at just over 7 pounds and is $3\frac{1}{2}$ inches shorter than similar tools. The Micro Filter system and two-fan design captures dust particles to reduce exposure to your crews. **For FREE information, visit <http://pb.ims.ca/5650-209>**

D Torque it Up a Notch

Stuffing the power of an 18-volt into a compact 12-volt body size is Hilti's SFH 144-A 14-Volt CPC Hammer Drill/Driver. The new product provides 609-inch-pounds of torque and can deliver up to 34,200 blows per minute in masonry block. The 14-volt model has all-metal gears and a drop-resistant fiberglass frame. **For FREE information, visit <http://pb.ims.ca/5650-210>**

E Job Sites Secured

Thefts are up. Make sure your tools are put away with Knaack's new Monster Box Piano Box Model 1000. The security solutions have a heavy-duty tubular steel frame and a four-point crane lift system. According to Knaack, the weather-resistant lock is virtually impervious to drilling and pry-in. The Power Pass electrical pass-through grommet provides a weatherproof power cord to charge batteries when the box is closed. **For FREE information, visit <http://pb.ims.ca/5650-211>**

F Close Quarter Contact

Skil's latest innovations come on board the 2372-01 7.2-volt Lithium-Ion Power Wrench. The Close Quarter $\frac{1}{4}$ -inch square drive accepts all standard sockets and river bits. The Smartcharge System is built in to the charger, providing overcurrent protection and allowing the tool to be stored on the charger indefinitely without damage to the battery. **For FREE information, visit <http://pb.ims.ca/5650-212>**

Building Tip

Steel Strong-Wall®

Panels Designed for Simplified, Faster Installation

In response to the needs of specifiers, builders and contractors, Simpson Strong-Tie has developed a complete line of cost effective, pre-manufactured shearwalls. Our Steel Strong-Wall shearwalls feature fewer parts and easier attachment at the top and bottom, and are engineered not only for strength, but also quick installation.

Simple and quick installation

All aspects of installation have been simplified, requiring fewer anchor bolts and screws, eliminating the need for washers or straps. Connections at the top and bottom of walls are faster and easier than ever. Our Steel Strong-Wall panels are also designed with pre-attached wood studs and pre-drilled holes for utilities.



More options available

Steel Strong-Wall shearwalls provide a variety of easy to install solutions. Additional technical information and installation details are available in the new *Strong-Wall Shearwalls* catalog to provide you with effective, easy to install solutions.

Call 800-999-5099
or visit www.strongtie.com.

SIMPSON
Strong-Tie®

©2007 Simpson Strong-Tie Company Inc. SSW-BTIP07

For FREE info go to <http://pb.ims.ca/5650-15>



Construction Equipment & Tools



G



H



J



I

G Nano-Sized Improvement

Rebuilt from the ground-up, the 18-Volt DC927 KL Cordless Hammer Drill with Nanotechnology by DeWalt sports new technology with a three-speed all-metal transmission and a new 18-volt battery platform that offers one-hour charging. The tool has a 1/2-inch self-tightening chuck to keep more torque on task. **For FREE information, visit <http://pb.ims.ca/5650-213>**

H Compressorus Maximus


The new Maxus X-Lite line of air compressors were chosen because of the rust-resistant aluminum tanks and lightweight construction (approximately 57 pounds) that takes half the weight out of the equation. The new compressors have pressure gauges, hose valves and 1.3-horse power oil-lube motor assembly protected by a roll bar. **For FREE information, visit <http://pb.ims.ca/5650-214>**

I They Nailed It

Paslode's 16-gauge Pneumatic Angled Finish Nailer is sure to boost competition. The nailer, model T250A-F16, is billed as the first angled finish nailer. The lightweight model has a uniquely angled magazine design to balance the weight well and can use nails ranging from 1 1/4 to 2 1/2-inches. The Quick Clear system clears nail jams quickly. **For FREE information, visit <http://pb.ims.ca/5650-215>**

J Finishing Fast and Clean

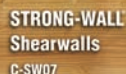
Cranking out 14,000 oscillations per minute with precision-engineered, all-ball-bearing construction comes Makita's BO4556K finishing sander. The new sander has a contoured palm grip design and large paper clamps so it operates smoothly and feels more comfortable. The through-the-dust-pad collection system cleans as you work. **For FREE information, visit <http://pb.ims.ca/5650-216>**



We take shearwall solutions
to new heights.



SIMPSON
Strong-Tie



STRONG-WALL
Shearwalls
C-SW07

Our new Strong-Wall® shearwall solutions for balloon framing and 2 story applications are two of the only solutions supported by full scale cyclic testing. Developed for engineered designs, as well as prescriptive wall bracing applications, our Strong-Wall solutions take various design factors into consideration – including foundation anchorage. And check out our new *Strong-Wall Shearwalls* catalog, for consolidated product and technical information, including structural and installation details to ensure faster, simplified installation. Let Simpson's cost effective shearwall solutions take your projects to new heights.

For more information visit us at www.strongtie.com
or call 1 800 999-5099.

For FREE info go to <http://pb.ims.ca/5650-16>

SIMPSON
Strong-Tie



Windows

A | See the Lite

Want great decorative glass but don't want to factor in the cost? The Design-Lite Glass window line from Peachtree creates great designs by using a new technology that combines acrylic and metal to create acrylic coming (with or without simulated edge bevels) or optically divided lites. **For FREE information, visit <http://pb.ims.ca/5650-217>**

46

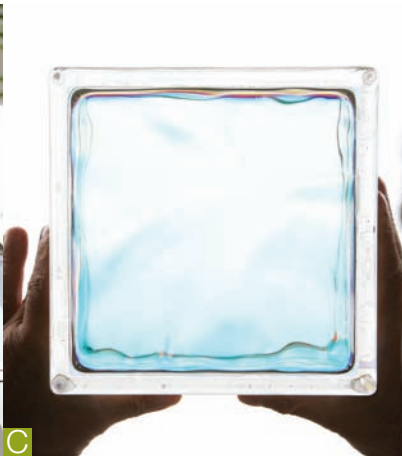
Windows are the proverbial black holes of energy loss during both cold and hot seasons. Wood composites, vinyl and fiberglass frames reduce temperature loss (or gain) and insulate the home. Because of these improvements, manufacturers have been able to produce windows with larger glass areas and transoms. Case in point: Peachtree's new Design-Lite Glass window line, which uses energy-efficient glass and decorative elements for great curb appeal.

A

Best Windows



B



C



D



E

B They Broke the Mould After This One

The new 600 Brickmould Series from Simonton Windows steps up from the 300 Series. Intended for traditionally wood-dominated areas, the windows are made in many configurations, and PVC grids are optional. The windows are Energy Star-qualified and are made with Low-E glass. **For FREE information, visit <http://pb.ims.ca/5650-218>**

C A Chip Off the Old Glass Block

This is something pretty unique. The Color Mirage decorative glass blocks introduced by the Applied Coatings Group are designed to transmit or reflect specific wave lengths and will appear to change color as lighting conditions or perspectives change. The line was created in conjunction with designer Carrie Fazio. **For FREE information, visit <http://pb.ims.ca/5650-219>**

D Lock it Up

Claiming to be the first company in the nation to introduce magnet lock technology for residential vinyl windows, Jeld-Wen's new MAG-Lock mechanism now comes standard on the company's Premium Vinyl slider and single-hung windows. The one-touch lock is easy to use and has an unobtrusive low-profile design. **For FREE information, visit <http://pb.ims.ca/5650-220>**

E New Features, Same Strength

Integrity from Marvin, Marvin Windows and Doors' Wood-Ultrex casement and awning windows have seen some significant improvements. These include a multipoint sequential lock, dual-arm operating roto gear and a heavy-duty sash keeper. The removable hardware makes it easier to work around the windows during installation. Five new casement sizes are also available. **For FREE information, visit <http://pb.ims.ca/5650-221>**

Pest Windows



F



G



H

F A Monumental Opening

Architects and even light commercial builders concerned with historical renovation should look at the new line from Hurd. The Monument collection features heavy-duty wood construction with extra thick extruded aluminum cladding. Casements, awnings and other shapes are available. **For FREE information, visit <http://pb.ims.ca/5650-222>**

G Leisurely Living

The Oasis Leisure Room series is a sample of the new technology hitting sunrooms. The Joyce Manufacturing line's four models range from seasonal to year-round with many options, including Low-E glass. All are made of heavy duty extruded aluminum stiffeners completely encapsulated in solid virgin vinyl. All windows are fusion welded sash and mainframe. Both sashes operate, and full screens are included. **For FREE information, visit <http://pb.ims.ca/5650-223>**

H Feel Presidential In Your Backyard

A new improvement to Gorell's Grand Additions sunrooms is the Presidential Series. The rooms have gabled or sloped designs with high-density Tuff-Kote Gold; three-inch snap-in insulating foam paneled roofs; and all-vinyl wall panels. You can specify casement, fixed or sliding windows and sliding or hinged vinyl doors. **For FREE information, visit <http://pb.ims.ca/5650-224>**



© 2008 General Ecology, Inc.

SEAGULL® IV
ENVIRONMENTALLY FRIENDLY DRINKING WATER PURIFIERS

Great tasting, "All Natural" purified water instantly, without using costly electricity, polluting chemicals, or wasting our vital water supplies. Independently certified to meet EPA Guide Standard Protocol for Microbiological Purifiers against Bacteria, Cysts and Viruses.

Builder Programs are available, call toll-free at **800-441-8166** for more information or to order. Order online at www.generalecology.com

For FREE info go to <http://pb.ims.ca/5650-200>



Soap Dishes
Shampoo Shelves
Toiletry Shelves
Shaving Steps

DÜK LINER™
The Custom Niche In 20 Minutes

888.821.2545
Dukliner.com

Effortless Installation • Increased Profitability • No Leak Callbacks

For FREE info go to <http://pb.ims.ca/5650-202>

GENUINE STONE TILES BY OUTWATER



Hand sorted by color, size and thickness, Outwater's Genuine Stone Tiles comprise 100% natural stones that are individually adhered in mosaic or stacked patterns onto mesh style backings to create easy to install, seamless interlocking 12"x12" and 4"x12" tiles. Ideally suited for interior or exterior use in a vast range of residential and commercial new construction or renovation projects, Outwater's Genuine Stone Tiles are offered in a variety of exotic and traditional round and flat stones in numerous styles and colors to suit a wide assortment of vertical or horizontal applications.

FREE 1,000+ PAGE MASTER CATALOG!

LOWEST PRICES...WIDEST SELECTION... ALL FROM STOCK!

ARCHITECTURAL PRODUCTS BY OUTWATER



Call **1-888-772-1400** (Catalog Requests)

1-800-835-4400 (Sales)

Fax **1-800-835-4403**

www.outwater.com

New Jersey • Arizona • Canada



For FREE info go to <http://pb.ims.ca/5650-201>

Laundry Room Referrals



I Had A Great Builder

You can see it in the details. With the Dryerbox®, my laundry finishes in half the time it took in my old house. My washer and dryer can be moved flush to the wall. Behind the dryer, there's no mess or crushed hose and no fire hazard.

the dryerbox®

Like I said,
 I had a great builder.
 Want to know
 his name?

CLASSIFIED
UL
 Fire Stop Device
 Control No. 253C

In-O-Vate
 Technologies Inc

888-443-7937
www.Dryerbox.com

For FREE info go to <http://pb.ims.ca/5650-203>



Finlandia Saunas are a Cut Above The Rest...

...with the highest quality materials and old country craftsmanship. In fact, we still use 1" x 4" wall and ceiling boards, while our competitors use only 1/2" x 4". That's why more architects and builders come back to **Finlandia Sauna** again...and again...for easy and trouble free installation of any standard or custom size, as well as best finished product.

Contact us at

800-354-3342

www.finlandiasauna.com

Nationally recognized since 1964!

For FREE info go to <http://pb.ims.ca/5650-204>

Cabinet & Millwork Shops • Contractors • Remodelers
Design/Build Firms • Project Managers

Commercial & Residential Casework

*The quality you demand.
The service you deserve.*

- Easily assembled, frameless cabinet boxes
- Storage & Closet Systems
- Custom-sized casework
- Drawer boxes
- Adjustable shelves
- Full overlay slab-style fronts
- Superb customer service
- Increased profitability
- Higher productivity
- Better cost control
- Consistent quality

For more information or to download a FREE digital catalog, please visit our website.

CabParts, Inc.®
Your Case Work Made EasySM

www.cabparts.com
970-241-7682



Confirmat
Joinery

Dowel
Joinery



For FREE info go to <http://pb.ims.ca/5650-205>



**GO
ONLINE:**
housingzone.com

for print or web
advertising contact:

SHELLEY PEREZ

P: 630.288.8022

F: 630.288.8145

shelleyperez@reedbusiness.com

challenge.inspire.inform.advertise.

CATCH ONE MISTAKE

and they pay for themselves!



Now More Than Ever, You Need These Tools

From start to finish, our tools help you save time, reduce costs and win more bids.

Every time. Every day.

- Fast, accurate takeoffs for estimating, bids and layouts
- Verify all measurements and calculate material needs and costs
- Solve tough construction-math problems when you're on the jobsite or in the office

Go to our contractor web site to learn how these calculators and estimating tools can work for you.

CountOnCI.com/boss8

CALCULATED INDUSTRIES®
FAST. ACCURATE. RELIABLE.

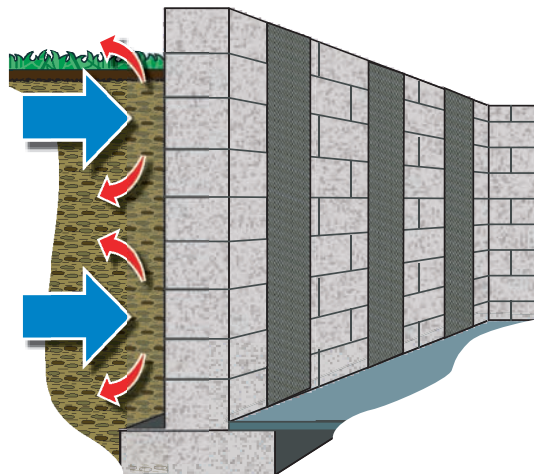
PROB-608

For a dealer near you call 1-800-854-8075
 4840 Hytech Drive, Carson City, NV 89706 • 1-775-885-4900 Fax: 1-775-885-4949

PREMIUM WALL LOCKING

At Manufacturers Price

FIBERLOCK™ WALL STRIPS



- Stabilize bowing walls
- Stronger than steel
- Simple Installation
- 12 In. x 8 Ft. Strips
- Multiple Kit Options
- Nearly 1/2 the cost of other Carbon Strips

SAVE WITH FIBERLOCK™

Leading Competitors

FIBERLOCK.

6 Strips = \$\$\$\$

6 Strips = \$\$

You Just Saved \$450.00

For product information
 visit us online @ www.kmsalesonline.com

1-866-527-6771

Innovative Carbon Fiber, Epoxy Resin Technology For Bowing Walls

FIBERLOCK™



MEMBER OF
**INTERNATIONAL
 CONCRETE REPAIR
 INSTITUTE**

BUY DIRECT & SAVE!

For FREE info go to <http://pb.ims.ca/5650-206>

Quick Curve PLATE

Shaped and Secured in Seconds!

- 1 Shape to desired position
- 2 Nail/staple into pivot area to lock shape
- 3 Install as you would other framing members

For Curved Walls, Ceilings, Soffits, Alcoves and more!

- ▶ Shape it by hand
- ▶ Secure the shape with nails or staples
- ▶ OSB sections link easily to form any length
- ▶ Works with typical wood 2x4 as top & bottom plates
- ▶ Nail, cut & anchor with same tools used for lumber
- ▶ Use as curved vertical studs (non-load bearing)
- ▶ Minimum outside radius is 12"

FLEXABILITY CONCEPTS

TOLL FREE 866.443.3539 EMAIL info@flexabilityconcepts.com
 WEB www.flexabilityconcepts.com

For FREE info go to <http://pb.ims.ca/5650-207>

Quick Low Cost



FALL PROTECTION

throughout construction including drywall

Build a freestanding OSHA compliant guardrail in minutes using construction grade 2X4s and Safety Boots.



Safety Boot

Safety Hammer

1-800-804-4741 • www.safetyboot.com

Independently certified to exceed OSHA temporary guardrail regulations, Safety Boots anchor to most surfaces including concrete and are fully reusable.

Freestanding design allows guardrails to remain in place throughout construction, including drywall installation.

For FREE info go to <http://pb.ims.ca/5650-209>

Maintenance-Free Aluminum Cupolas and Louvers



NEW CONCEPT LOUVERS

Stock & custom cupolas from New Concept Louvers are wrapped with PVC coated aluminum and copper. Made from the same materials as our custom louvers, they never require painting like wood products. They arrive in three easy to install pieces pre-cut to fit any roof pitch, and can be ordered in stock sizes or to custom specifications. Over 400 colors are available, as well as many different weather vanes and accessories.

Telephone: 1-800-635-6448
www.NewConceptLouvers.com

For FREE info go to <http://pb.ims.ca/5650-210>

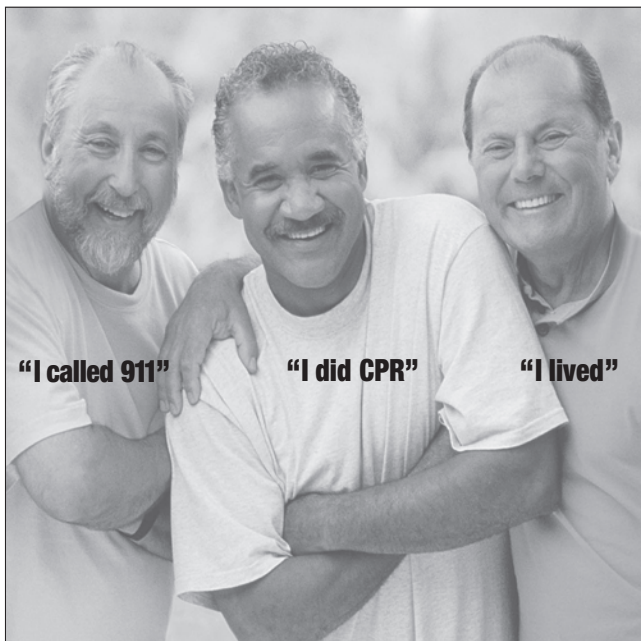
How did your last door installation "PAN" out?



Jamsill Guard®
 Sill Pan Flashing for Doors & Windows

1-800-JAMSILL (526-7455) www.jamsill.com/ProBuilder

For FREE info go to <http://pb.ims.ca/5650-208>



If someone near you collapses, loses consciousness and stops breathing, chances are their heart has stopped. Call 9-1-1 immediately and do CPR until help arrives.

If you don't know CPR, learn. To find a CPR course near you, call the American Heart Association at 1-877-AHA-4CPR or visit us online at www.americanheart.org.

American Heart Association®

Fighting Heart Disease and Stroke

PRODUCT SHOWCASE / INTERIOR & EXTERIOR



UDA ConstructionSuite™

Construction Software for Small to Medium Businesses

Professional Builder®

100 BEST

NEW PRODUCTS

AWARD

ConstructionSuite™
Standard
starting at **\$399**

ConstructionSuite™
Premier
starting at **\$999**

ConstructionSuite™
Network
5 user package **\$4999**



www.constructionsuite.com • 1.800.700.UDA1 (8321)

For FREE info go to <http://pb.ims.ca/5650-211>

53

CREATE A WATERTIGHT SHOWER

NobleSeal® TS
Thin-set waterproofing for shower walls, floors, drying areas, etc.

Chloraloy®
Premium shower pan liner. Made from CPE. Stays flexible.

Noble Niches and Curbs
Waterproof, lightweight & "tile ready". Install in minutes.

Clamping Ring Drain
With square or round strainers.

Positive Weep Protector™
Keeps weepholes clear.

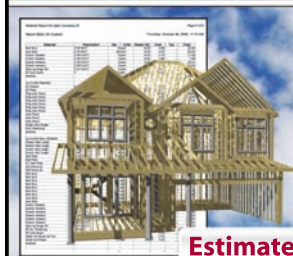
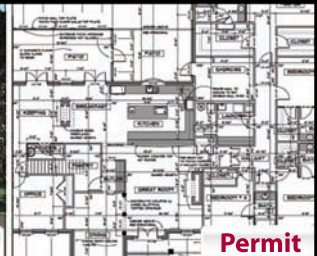
Pre-formed Shower Dam Corner

PRO-SLOPE™
A preformed composite that creates the code required slope. Easy to install.

Noble Company
800-878-5788
www.noblecompany.com

For FREE info go to <http://pb.ims.ca/5650-212>

Always the Leading Design Software for Professionals and Now... **Version 14**



for a free trial version
1-800-248-0164
www.softplan.com
PCBC • San Francisco
Booth #2125

Version 14
SOFTPLAN
ARCHITECTURAL DESIGN SOFTWARE

For FREE info go to <http://pb.ims.ca/5650-213>

ad index

Company	Page #	Circle #	Phone #	For more information
CertainTeed Roofing	32	13	800/233-8990	http://pb.ims.ca/5650-13
DEMILEC (USA) LLC	25	10	877.DEMILEC (336-4532)	http://pb.ims.ca/5650-10
Dow Chemical Company	36	14	888/668-3801	http://pb.ims.ca/5650-14
Fi-Foil	c3	17	800/448-3401	http://pb.ims.ca/5650-17
JELD-WEN	c4	18	800/535-3462	http://pb.ims.ca/5650-18
Joyce Manufacturing Co.	15	5	800/824-7988	http://pb.ims.ca/5650-5
Latitudes	26	11	888-270-0750	http://pb.ims.ca/5650-11
Marvin Windows & Doors	17	7	800/435-0013	http://pb.ims.ca/5650-7
Monier Lifetile	24	9	800/571-8453	http://pb.ims.ca/5650-9
On Center Software	16	6	800/880-8254	http://pb.ims.ca/5650-6
Rinnai America Corp.	18	8	800/621-9419	http://pb.ims.ca/5650-8
Simonton Windows®	4	2	800/542-9118	http://pb.ims.ca/5650-2
Simpson Strong-Tie Co. Inc.	44, 45	15, 16	800/999-5099	http://pb.ims.ca/5650-15
Therma-Tru Doors	c2	1	800/THERMA-TRU	http://pb.ims.ca/5650-1
Versatex Trimboard	10	4	724/266-7928	http://pb.ims.ca/5650-4
Viega	30	12	1-877-VIEGA-NA	http://pb.ims.ca/5650-12
Wayne-Dalton Corp.	6	3	800/827-DOOR	http://pb.ims.ca/5650-3

how to reach professional builder

Editorial Submissions

letters to the editor

Send to Paul Deffenbaugh >
2000 Clearwater Drive, Oak Brook, Ill. 60523 or
paul.deffenbaugh@reedbusiness.com

products

Submit high-resolution images and text to
Nick Bajzek, buildingproducts@reedbusiness.com

Subscriptions

correct, remove or add a subscription

Subscription department >
subscriptions@reedbusiness.com or 800/446-6551

back issues

Extra issues are available upon request. E-mail
jennifer.powell@reedbusiness.com

reprints

The YGS Group > Angie Van Gorder,
angie.vangorder@theygsgroup.com, or 717-399-1900,
ext. 716

Conferences and Events

benchmark

Visit www.probuilder.com/benchmark or e-mail
jbrociek@reedbusiness.com for more information.

show village

Visit www.probuilder.com/showvillage for more
information.

Awards

best in american living award

Visit www.probuilder.com/bala or e-mail
heather.weber@reedbusiness.com for more
information.

advertising sales

Publisher

Tony Mancini, 610/205-1180
Fax 610/205-1183
armancini@reedbusiness.com

Director of Sales

Jeff Elliott, 616/846-4633
Fax 616/846-4802, jelliott@reedbusiness.com

Emedia Solutions Manager

Shannon Darmody, 630/288-7963
Fax 630/288-8145
shannon.darmody@reedbusiness.com

Regional Manager Northeast

CT, DC, DE, ME, MD, NH, NJ, NY, PA, RI, VT, VA, WV
John Huff, 630/288-8189
Fax 630/288-8145, john.huff@reedbusiness.com

Regional Manager Southeast

AL, FL, GA, MS, NC, SC, TN
Craig Coale, 630/288-8207,
Fax 303/265-5990, ccoale@reedbusiness.com

Regional Manager Southwest and Great Lakes

AZ, AR, Southern CA, CO, HI, IL, KY, LA, NM, OH, OK, TX, Eastern Canada
Jessica Elliott, 651/290-7694
Fax 303/265-2064
jessica.elliott@reedbusiness.com

Regional Manager Midwest

IA, IL, KS, MN, MO, NE, WI
Tim Gillerlain, 630/288-8168
Fax 630/288-8145
tim.gillerlain@reedbusiness.com

Regional Manager Northwest

AK, ID, MT, NV, ND, Northern CA, OR, SD, UT, WA, WY, Western Canada
Emily Clay, 503/675-3861
Fax 303/265-3697
emily.clay@reedbusiness.com

Senior Account Manager

Michigan and Inside Sales
Rob Bertrand, 630/288-8615
Fax 303/265-2526
rob.bertrand@reedbusiness.com

Inside Sales

Shelley Perez, 630/288-8022
Fax 630/288-8145
shelley.perez@reedbusiness.com

Administrative Support

Rebecca Breskman, Administrative Assistant
610/205-1179, Fax 610/205-1183
rebecca.breskman@reedbusiness.com

Pat Mustari, Administrative Assistant
630/288-8223, Fax 303/265-5469
pmustari@reedbusiness.com

Director of Events

Judy Brociek, 630/288-8184
Fax 630/288-8145, jbrociek@reedbusiness.com

Marketing Director

Gayle Colbert, 630/288-8693
Fax 630/288-8145
gayle.colbert@reedbusiness.com

Marketing/Events Coordinator

Heather Weber, 630/288-8109
Fax 303/265-2695
heather.weber@reedbusiness.com

Custom reprints and electronic usage

The YGS Group, Angie Van Gorder
717/399-1900 x176
angie.vangorder@theygsgroup.com

Advertising Production Manager

Paul Brouch, 630/288-8074
pbrouch@reedbusiness.com

Advertising Contracts

Stephanie West, 630/288-8419
stephanie.west@reedbusiness.com

Graphic Production Manager

Rick Lesser, 630/288-8443
rick.lesser@reedbusiness.com

Editorial & Publishing Office

Professional Builder
2000 Clearwater Drive, Oak Brook, IL 60523
Phone: 630/288-8000, Fax: 630/288-8145

To Advertise: See above for the office closest to you, or write to the Publisher. Best in American Living Award: To enter this design contest, contact address above. Annual Report of Housing's GIANTS®: To request a survey form, contact GIANTS400@reedbusiness.com. For subscription inquiries and change of address: Customer Service, Reed Business Information, 8878 S. Barrons Blvd., Highlands Ranch, CO 80126-2345; phone: 303/470-4445; fax: 303/470-4280; e-mail: subsmail@reedbusiness.com.



Flash & FOIL™

The Ultimate Hybrid Insulation System!

**PROFESSIONAL BUILDER'S
TOP 100 PRODUCTS FOR 2008!**

Introduced at the International
Builders Show

WHY SPRAY FOAM?

- Seals wall cavity – reduces air infiltration
- Adds high R-value per inch

R-19

..... 2" x 4"
See R-value Summary Report on Our Website

WHY FLASH & FOIL™?

- VR Plus Shield™ Reflective Insulation adds a minimum R-7 to the remaining cavity
- No Fibers
- Cost Effective
- Vapor Retarder Option
- Class A Flammability Rating
- Meets Code Compliance –
ICC ES Report #2133a
- Green – Get LEED and NAHB credits

*Available through our National Network of
Insulation Contractors and Distributors.*

**Call today 1-800-448-3401
or visit www.FlashAndFoil.com**



Residential • Commercial



**Available in Staple-Tab for wood and
Tape-Tab for metal framing**



**Lightweight and compact 500 sq. ft.
rolls in 16" & 24" widths**



Our Solutions Reflect on You

For FREE info go to <http://pb.ims.ca/5650-17>



BE THE *envy* OF DRIVEWAYS EVERYWHERE.

There's something that sets our Wood Composite garage doors apart. They simply make any garage more attractive. Each one features a beautiful, dent-resistant woodgrain surface that will endure for years. Designs are available to complement different architectural styles and they can be enhanced with various aesthetic options. To learn more, call 1.800.877.9482, ext. 8414, or visit www.jeld-wen.com/8414.

RELIABILITY *for real life*®

JELD-WEN
WINDOWS & DOORS